



Kung Fu Panda™ Lantern

# Blue lotus

## ASSEMBLY INSTRUCTIONS

Time to Complete: Approximately 60 minutes

Level: Medium

### GETTING STARTED

**Materials:**

- Metal-edged ruler
- Butter knife
- Hole punch
- Scissors or X-ACTO knife
- Cutting mat (optional)
- Multipurpose glue
- String (24 inches)

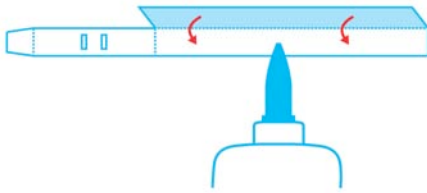
1. Score all the pieces: Using a ruler as a guide, run the back side of a butter knife firmly along all the dotted lines.



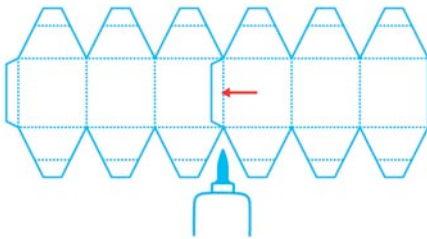
2. Using scissors or an X-ACTO knife and cutting mat, cut out all pieces along the solid lines. Punch holes in handle where marked with an "x".



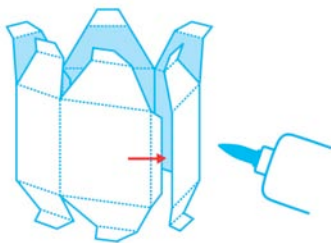
### ASSEMBLE THE LANTERN



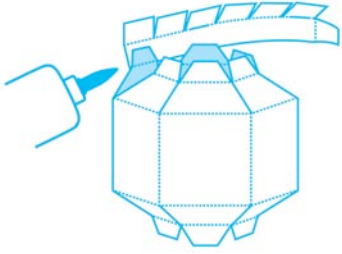
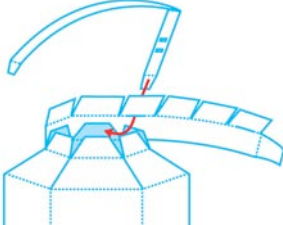
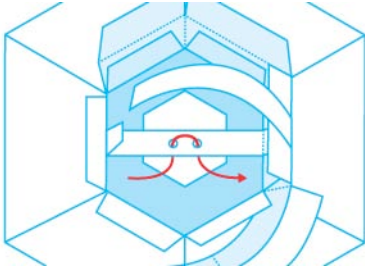
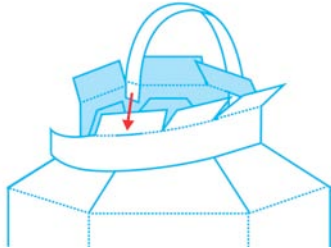
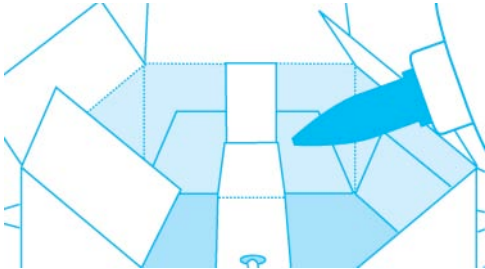
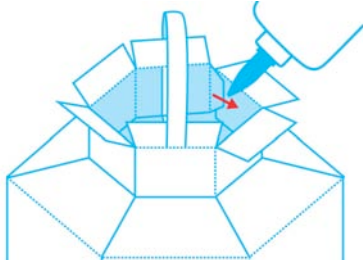
3. Fold handle (1) in half and glue together. Set aside.

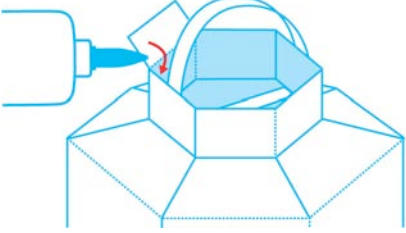
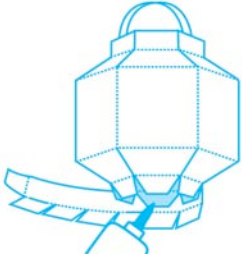
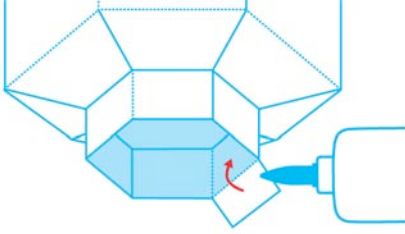
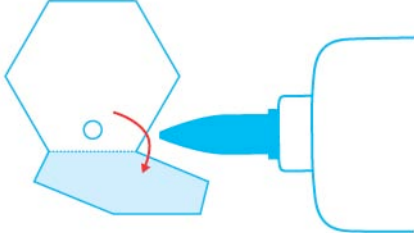
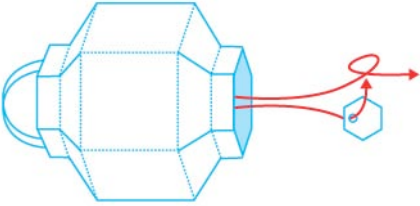


4. Fold all scored lines inward except for top and bottom white tabs, which are folded outward. Glue tab A on front (2) to the inside of back (3).



5. Glue tab B to the inside of front, to form a single piece.

|   |   |
|---|---|
|    | <p>6. This will be the top of your lantern so make sure your artwork is facing right side up. Starting with the side without the tabs and with top tabs folded outward, glue base of the top strip (4) to the first three tabs. As you glue each section, make sure you snug up the lantern so that the sections are as close together as possible.</p> |
|    | <p>7. Insert handle through the slit on the third flap and curve across the lantern.</p>  |
|   | <p>8. Thread string up one hole and down the other, then pull string ends out the bottom of lantern.</p>  |
|  | <p>9. Continue gluing base of top strip to remaining tabs, working from left to right. Stop before gluing last tab. Thread the handle into slit on last flap.</p>   |
|  | <p>10. Stretch the part of the handle with the strings on it (bridge tab) to meet the handle end you just threaded. Be sure the crease in bridge tab sits just below the bottom of the top strip where it is to be glued. This will prevent the bridge from ripping when you glue upper tabs down because it reinforces the ends.</p>                   |
|  | <p>11. Tuck remaining tab inside strip and glue in place.</p>   |

|   |   |
|---|---|
|    | <p>12. Fold strip flaps inward and down, one at a time, and glue into place.</p>  |
|    | <p>13. With bottom tabs folded outward, glue base of bottom strip (5) to each tab, working from left to right. As you glue each section, make sure you snug up the lantern so that sections are as close together as possible. Tuck remaining tab inside strip and glue in place.</p> |
|   | <p>14. Fold flaps inward and up, one at a time, and glue in place.</p>  |
|  | <p>15. Fold ornament (6) in half and glue together. Punch hole where indicated with an "x".</p>   |
|  | <p>16. With string pulled through bottom of the lantern, loop through the ornament and tie to secure.</p>   |