



Kung Fu Panda™ Wall Mask

# Master Viper

ASSEMBLY INSTRUCTIONS

Time to Complete: Approximately 30 minutes

Level: Easy

## GETTING STARTED

**Materials:**

- Metal-edged ruler
- Butter knife
- Scissors or X-ACTO knife
- Cutting mat (optional)
- Multipurpose glue
- Hole punch

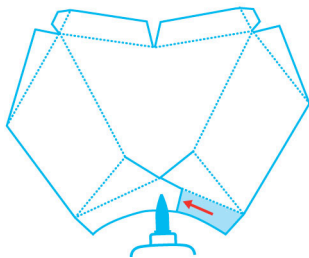
1. Score all the pieces: Using a ruler as a guide, run the back side of a butter knife firmly along all the dotted lines.



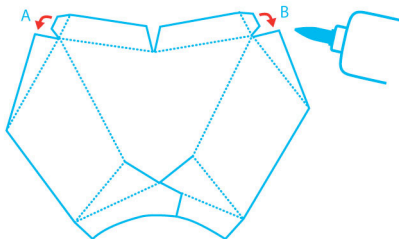
2. Using scissors or an X-ACTO knife and cutting mat, cut along solid lines of all the pieces.



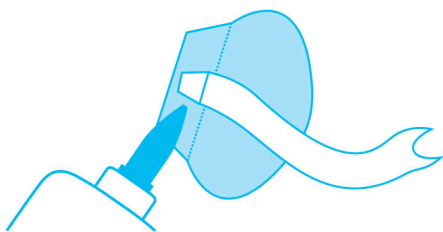
## ASSEMBLE THE WALL MASK



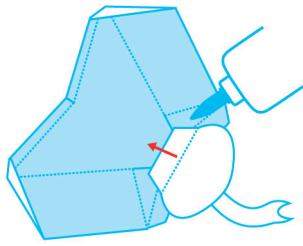
3. On head piece (1), overlap lip tabs until graphics are aligned and glue in place. Make sure that the long triangular flap is tucked underneath lip tabs, creating the curve of the nose.



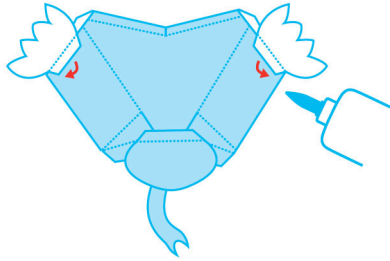
4. Tuck tab A under adjacent edge and glue in place. Repeat with tab B.



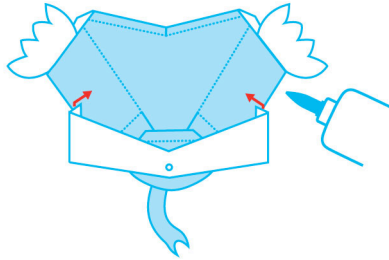
5. Glue the tab on the tongue piece (2) to the tab on the separate mouth piece (3).



6. Glue the tab on the separate mouth piece to the underside of the head's mouth panel.



7. Glue the flower pieces (4) to the backside of the head as shown.



8. Punch a hole where marked with an "x" on wall piece (5) and fold on the dotted line. Glue the tabs on the wall piece to the inside of head as shown, about an inch in from the outside edge of the mask. You're done!