



HP Universal Print Driver for Windows, version 4.7

HP PCL6 • HP PCL5 • HP postscript level 2 and 3 emulation



Transform your printing environment and improve your efficiency.

When you are ready to update your printing environment, the HP Universal Print Driver can help you create a simpler, more efficient architecture. Reduce the number of drivers required and give users instant access to a broad range of HP print devices without downloading separate drivers.

Simplify your print environment

As you add new devices or update your printing environment, the HP Universal Print Driver can help eliminate driver chaos by dramatically reducing the number of drivers you need. Broad compatibility ensures that the driver works with many HP print devices, including networked and direct-connected HP LaserJet and Edgeline print devices using PCL 5, PCL 6, or postscript emulation.

Flexible driver configuration allows you to make mobile printing easier. Dynamic mode locates network printers, or you can enter a printer's name or address to print anywhere on your network. When you select Traditional mode, the driver works like the device-specific drivers you are accustomed to. Both modes can be used on the same PC to allow you to print what you want no matter where you are.

Enjoy easy management tools

Create print queues and update drivers on remote systems from one location via HP Web Jetadmin. No matter where your users are, they have the benefit of the latest version of the HP Universal Print Driver, and you have the convenience of deployment from a single location.

Help secure your printing environment and printers by setting Private Printing as a default. This allows users to queue print jobs and release the print jobs at the device. You can also secure your print path using solutions specifically created for the HP Universal Print Driver by our print solutions partners.

Determine who uses colour and when. Assign colour access by user, application, or time of day, or shut colour capability down completely until it's needed for special projects.

Reduce paper use and save money

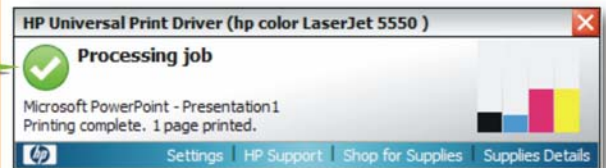
Employ policy controls to help your company reduce its impact on the environment and save money. The HP Universal Print Driver's new Eco Print shortcut allows users to select automatic two-sided printing as a default, making it easier to reduce paper use.

Download this free software and find more information at www.hp.com/go/upd

Count on effortless printer discovery, customised printing, broad compatibility, and proven reliability.

- ✓ **Meet users' needs at home and on the road** The HP Universal Print Driver can operate in two different modes to accommodate changing user needs. Dynamic mode allows you to find printers on a network, which is particularly valuable when you're on the road or want to print to a new device. Traditional mode performs like a traditional driver. Both modes can be used on the same PC to ensure the best user experience.
- ✓ **Optimise print management architecture** Enterprise and other organisations that manage printing for multiple users can employ the power of the Universal Print Driver to streamline their print management architecture. The print driver helps eliminate driver chaos in your print environment by dramatically reducing the number of drivers needed. Broad compatibility ensures it works with many HP print devices.
- ✓ **Experience easy office integration** The HP Universal Print Driver works with both networked and direct-connected HP devices. And, when you are creating a printer path in HP Web Jetadmin, the HP Universal Print Driver is the default driver. The two tools work seamlessly together.
- ✓ **Manage users' printing experience** Use HP Managed Printing Administration (MPA) software or Active Directory (AD) templates to provide an automated method to create a controlled and customised print environment. Assign users groups and policies that help control costs by limiting access to colour printing or require two-sided printing, for example. You can also customise Status Notification Pop-ups (SNPs) so that only those responsible for ordering supplies receive those alerts.
- ✓ **Depend on the HP Universal Print Driver to perform** The HP Universal Print Driver is built on proven HP print driver technology. Tested thoroughly and used in many applications for years, the HP Universal Print Driver is a powerful solution that you can rely on to perform consistently.

The driver communicates with each HP device and automatically customises the user interface for each device's unique features.



Real-time print job and device information empowers users to resolve common problems.



Real customers are saving time and money with the HP Universal Print Driver.

The HP Universal Print Driver delivers more than convenience—it delivers concrete savings in time and money.

- A large university estimates that it now spends 20-30 percent less time adding new sites and has eliminated the time previously spent resolving driver issues.
- An insurance provider anticipates a 75 percent decrease in manpower to integrate printers.
- A construction management company expects a 50 percent reduction in the 16 hours it spends each month installing and maintaining print drivers.¹

Buyer's Lab recently awarded HP's Universal Print Driver an "Outstanding Achievement Award" for its colour control capabilities. The lab noted that HP's colour access controls are clearly the most comprehensive and that HP stands alone as the only vendor whose products are also capable of restricting colour output by application, including the Web.

Powerful tools make management easy and effective.

Get even more functionality from the HP Universal Print Driver—use the HP Managed Printing Administration software or Active Directory templates to match print policies with company goals, control colour access, create user groups, create printer lists, set defaults, manage notifications, and more. Create a customised print environment and manage the user print experience with ease.

Help users find and connect to HP print devices quickly with Managed Printer Lists.

Help users locate the printers they need—without help desk assistance—by creating Managed Printer Lists (MPLs). MPLs group printers by characteristics such as location, department, features (colour or advanced finishing), or printer type.

MPLs provide fast and easy click-and-print capability. Simply choose a printer, click on it, and print! Select a list format, which shows printer names and includes a brief description of each, or choose map display, which indicates printer locations on a map of the facility.

Create an MPL and then add printers or import printers from HP Web Jetadmin and Novell print shares, saving you the time it would take to re-create the lists manually.

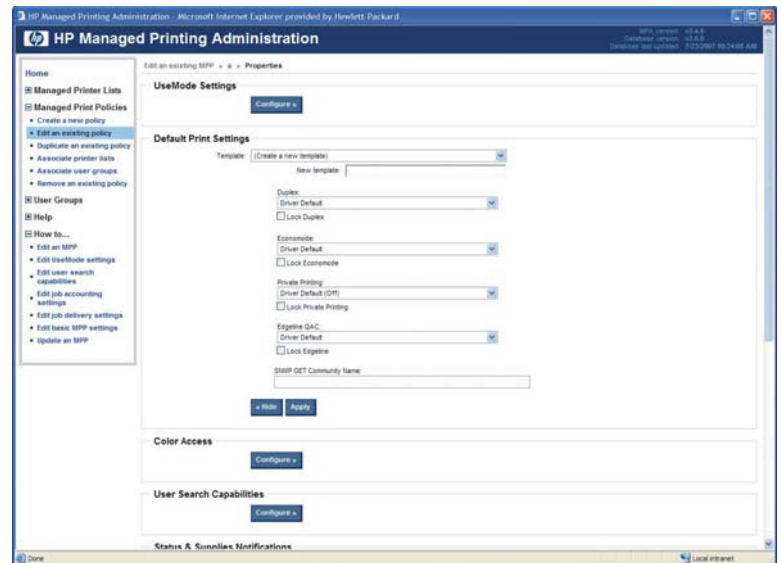
Create and modify user groups.

Establish user groups based on unique needs, such as colour access, location, or online supplies ordering. Use HP's MPA software to associate user groups with available printers and to control printing features.

Create and modify Managed Print Policies.

Assign MPLs and Managed Print Policies (MPPs) to meet users' printing needs efficiently.

- **Conserve paper resources and reduce office costs**—Printing documents on both sides reduces printing costs and virtually doubles the printer's input capacity. Create an MPP that ensures users always print two-sided documents.
- **Protect your colour investment**—Default to Economode, assign colour access by user or application, or shut colour capability down completely until it's needed for special projects. This ensures that the people who truly need to leverage the power of colour have it, while others automatically default to black-and-white printing.



¹ From "One Driver to Rule Them All: The Universal Print Driver," published in InfoTrends, November 15, 2006.

- **Manage printer status notifications**—Customise job, device, and supplies status notifications. If you choose, notifications may include links that allow users to contact support or shop online for supplies. For more information, visit www.hp.com/learn/suresupply.

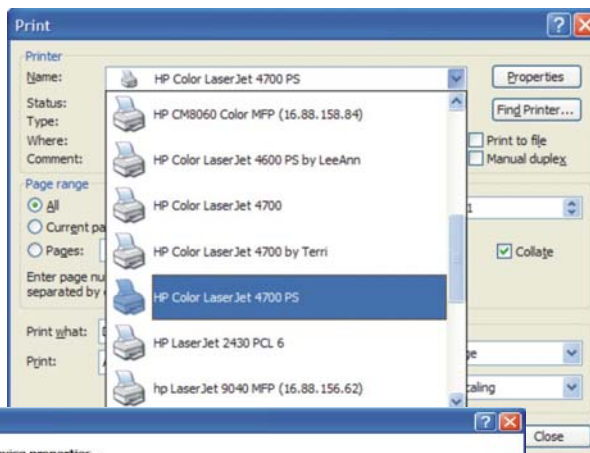
Accommodate changing user needs

Because the HP Universal Print Driver is flexible, you can install it in Traditional or Dynamic mode. For the best user experience, you can have both modes running on your PC at once.

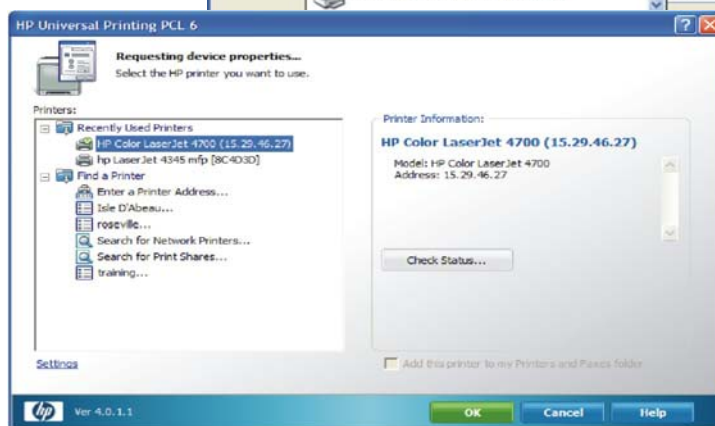
Traditional mode functions like most product-specific print drivers you are accustomed to using. During installation, the driver is associated with a specific printer, creating a permanent instance of the driver.

You can also install it in Dynamic mode, which is unique to the HP Universal Print Driver. Dynamic mode allows users to find and connect to network print devices on their own—without IT or help desk assistance. Unlike product-specific drivers, users can print within any network or print environment without downloading a product-specific driver—perfect for printing on the road or for when users want to print to a new device.

Traditional mode



Dynamic mode



Technical specifications

Compatibility

Client operating systems supported: Microsoft® Windows Vista® Business, Enterprise, Home Basic, Home Premium, and Ultimate, 32-bit x86 and x64; Microsoft Windows XP® (SP2 and later) Embedded, Home Edition, and Professional, 32-bit x86 and x64; Microsoft Windows 2000 (SP3) through March 2007

Server operating systems supported: Microsoft Windows Server 2008 Datacenter, Enterprise, and Standard Editions (Architectures: 32-bit x86 and x64; Services: Terminal Server, Cluster Server); Microsoft Windows Server 2003 (SP1 and later) Datacenter, Enterprise, and Standard Editions (Architectures: 32-bit x86 and x64; Services: Terminal Server, Cluster Server); Microsoft Windows 2000 Advanced Server (Services: Terminal Server); Microsoft Windows 2000 Server (SP4) (Services: Terminal Server; Citrix Presentation Server 3.0, 4.0 and 4.5); Citrix MetaFrame XP FR 1, 2, 3; Citrix MetaFrame 1.8 on Windows 2000 Terminal Services; Novell NetWare 6.5 (SP7); Novell iPrint Client for Windows 4.36; Novell iPrint Client for Windows Vista 5.04; and Novell iManager 2.7

Supported devices

Supports a broad range of HP printers, MFPs, and AiOs. For more information, go to www.hp.com/go/upd.

To download the free HP Universal Print Driver Series for Windows, go to: www.hp.com/go/upd

For support and more information, go to: www.hp.com/support/universalprintdriver

To download the HP Managed Printing Administrator or HP's Active Directory Templates, go to: www.hp.com/go/mpa

For support and more information, go to: www.hp.com/support/mpa



Microsoft, Windows, and Windows XP are registered trademarks of Microsoft Corporation. Windows Vista is either a registered trademark or trademark of Microsoft Corporation in the United States and/or other countries.

© Copyright 2008 Hewlett-Packard Development Company, L.P.

The information contained herein is subject to change without notice. The only warranties for HP products and services are set forth in the express warranty statements accompanying such products and services. Nothing herein should be construed as constituting an additional warranty. HP shall not be liable for technical or editorial errors or omissions contained herein.

For more information, visit our website at www.hp.com/go/upd

